

HAMMERTON

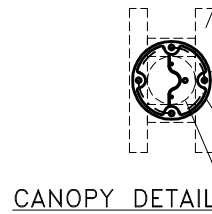
REQUIRED BLOCKING TO SUPPORT WEIGHT OF FIXTURE. BLOCKING IS REQUIRED ON ALL SIDES.

Ø6½" HAMMERTON STANDARD CANOPY. CANOPY MUST BE ATTACHED TO BUILDING STRUCTURE.

Ø5½" BOLT CIRCLE

4" STANDARD JUNCTION BOX.

MOUNTING HOLES ARE AT 2¾" ON CENTER



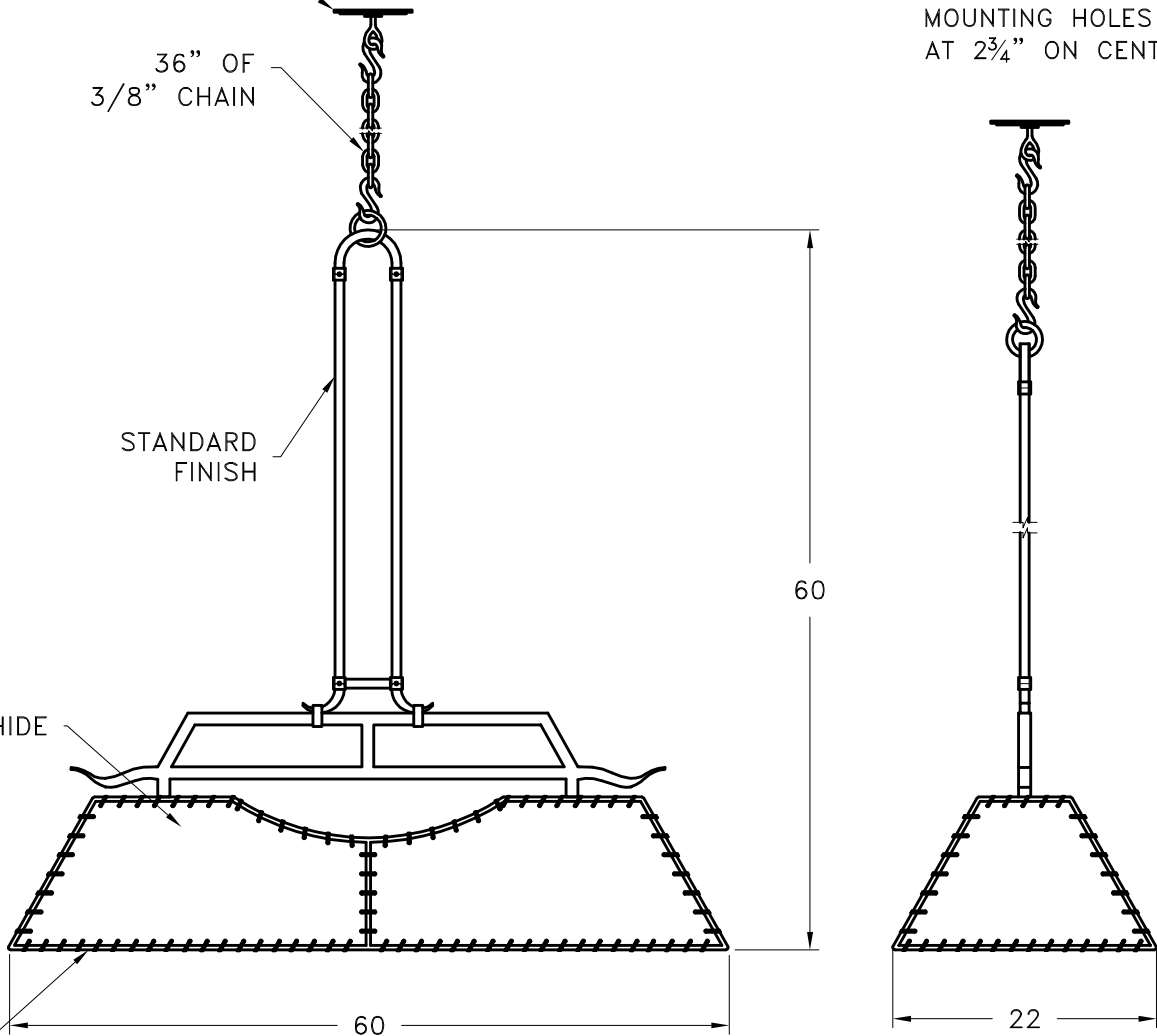
STANDARD FLAT MOUNT CANOPY

36" OF 3/8" CHAIN

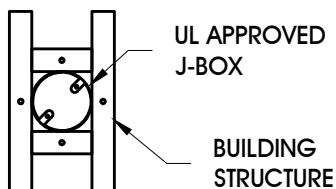
STANDARD FINISH

RAWHIDE

OPEN BOTTOM



MOUNTING SPECIFICATION NOTES:



UL APPROVED J-BOX

BUILDING STRUCTURE

CAUTION

HARDWARE PACKET "A" MOUNTS DIRECTLY TO BUILDING STRUCTURE.

ELECTRICAL SPECIFICATION NOTES:



**ELECTRICAL: 6-75 WATT MAX
EDISON BASE
120v TYPICAL**

Light Bulb NOT Included

CATALOG # PL5010

APPROXIMATE WEIGHT: 55 Lbs.

HARDWARE PACKET: A

SHADE MATERIAL : RAWHIDE

UL RATING: DRY

DIMENSION TOLERANCE ±7/8".

www.hammerton.com

© Copyright 2006, All rights in design, detail or invention of this drawing are reserved as the property of Hammerton. Any imitation or adaptation without written consent is strictly prohibited.