

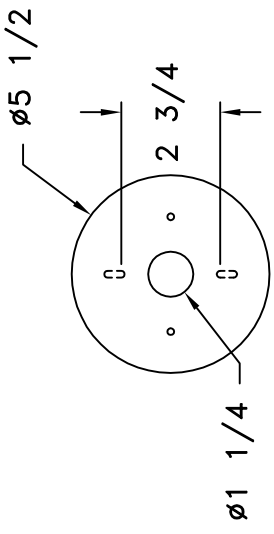
# HAMMERTON

# SPECIFICATION DRAWING

Approved By:

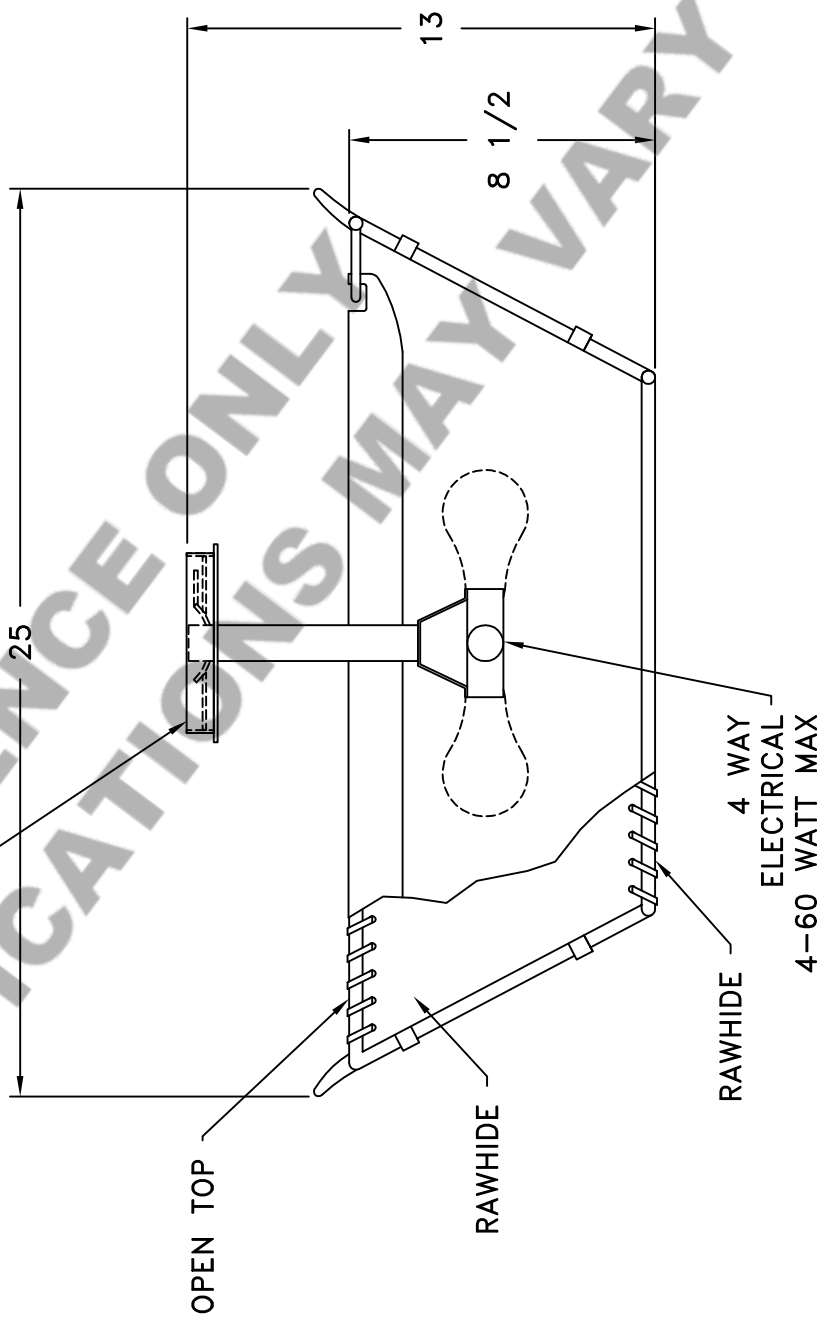
Product #: CL5045

Date: 5/21/15



## MOUNTING DETAIL

STANDARD HANG  
STRAIGHT CANOPY



<b>Mounting Style:</b> SLOPED	<b>Electrical Type:</b> INCANDESCENT
<b>Approximate lbs.:</b> 30	<b>Bulb Qty:</b> 4 <b>Wattage:</b> 60
<b>Finish:</b> SEE TRAVELER	<b>Voltage:</b> 120
<b>Top Diffuser:</b> OPEN	<b>Socket Type:</b> MEDIUM
<b>Bottom Diffuser:</b> SAME AS LENS	<b>UL Location:</b> DRY

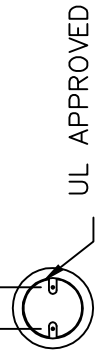
All fixtures created by Hammerton are handcrafted by artisans—dimensions may vary.

© Copyright 2013. All rights in design, detail or invention of this drawing are reserved as the property of Hammerton. Any imitation or adaptation without written consent is strictly prohibited.

Hammerton Inc. · 217 Wright Brothers Dr. · Salt Lake City, UT 84116 · (801) 973-8095

## Mounting Detail

2 3/4 O.C.



CAUTION

HARDWARE PACKET "J"  
MOUNTS DIRECTLY TO  
J-BOX.