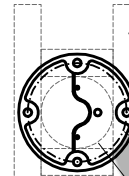
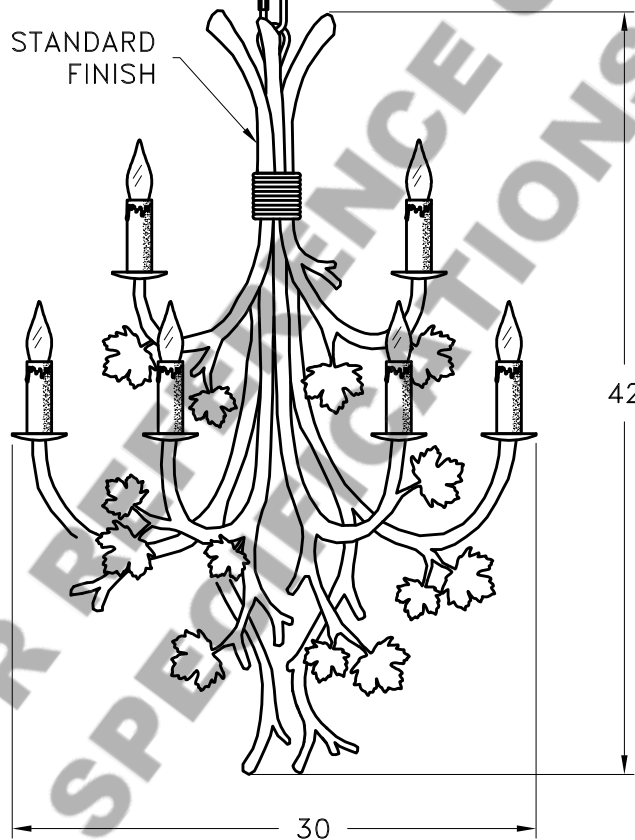


HAMMERTON

STANDARD FLAT MOUNT CANOPY

6' OF 1/4" CHAIN

STANDARD FINISH



CANOPY DETAIL

REQUIRED BLOCKING TO SUPPORT WEIGHT OF FIXTURE. BLOCKING IS REQUIRED ON ALL SIDES.

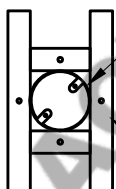
ø6½" HAMMERTON STANDARD CANOPY. CANOPY MUST BE ATTACHED TO BUILDING STRUCTURE.

ø5½" BOLT CIRCLE

4" STANDARD JUNCTION BOX.

MOUNTING HOLES ARE AT 2¾" ON CENTER

MOUNTING SPECIFICATION NOTES:



UL APPROVED J-BOX

BUILDING STRUCTURE

CAUTION

HARDWARE PACKET "A" MOUNTS DIRECTLY TO BUILDING STRUCTURE.

ELECTRICAL SPECIFICATION NOTES:



**ELECTRICAL: 12-40 WATT MAX
EDISON BASE
120v TYPICAL**

Light Bulb NOT Included

CATALOG # CH7090-MP

APPROXIMATE WEIGHT: 60 Lbs.

HARDWARE PACKET: A

SHADE MATERIAL : N/A

UL RATING: DRY

DIMENSION TOLERANCE ±7/8".

www.hammerton.com

© Copyright 2006, All rights in design, detail or invention of this drawing are reserved as the property of Hammerton. Any imitation or adaptation without written consent is strictly prohibited.