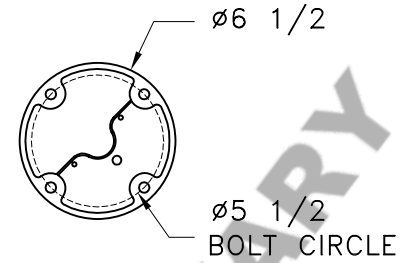


HAMMERTON

STANDARD FLAT MOUNT CANOPY

72" OF 3/8" CHAIN

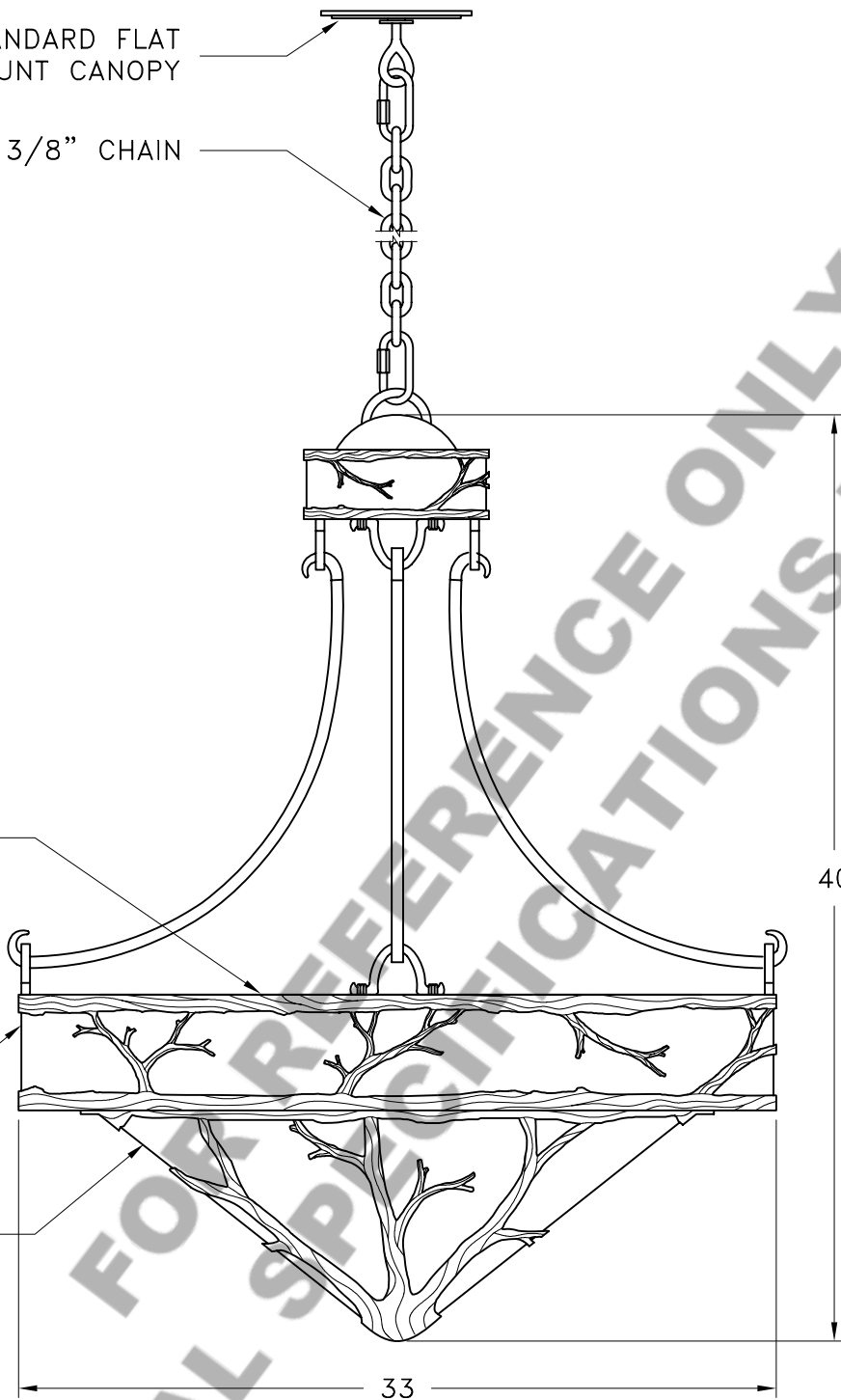


MOUNTING DETAIL

MESH

MICA

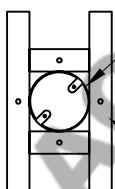
MICA



40

33

MOUNTING SPECIFICATION NOTES:



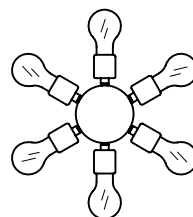
UL APPROVED J-BOX

BUILDING STRUCTURE

CAUTION

HARDWARE PACKET "A" MOUNTS DIRECTLY TO BUILDING STRUCTURE.

ELECTRICAL SPECIFICATION NOTES:



**ELECTRICAL: 6-75 WATT MAX
EDISON BASE
120v TYPICAL**

Light Bulb NOT Included

CATALOG # CH7021-BC-M

APPROXIMATE WEIGHT: 125 Lbs.

HARDWARE PACKET: A

SHADE MATERIAL : MICA

UL RATING: DRY

DIMENSION TOLERANCE $\pm 7/8"$.

www.hammerton.com

© Copyright 2006, All rights in design, detail or invention of this drawing are reserved as the property of Hammerton. Any imitation or adaptation without written consent is strictly prohibited.