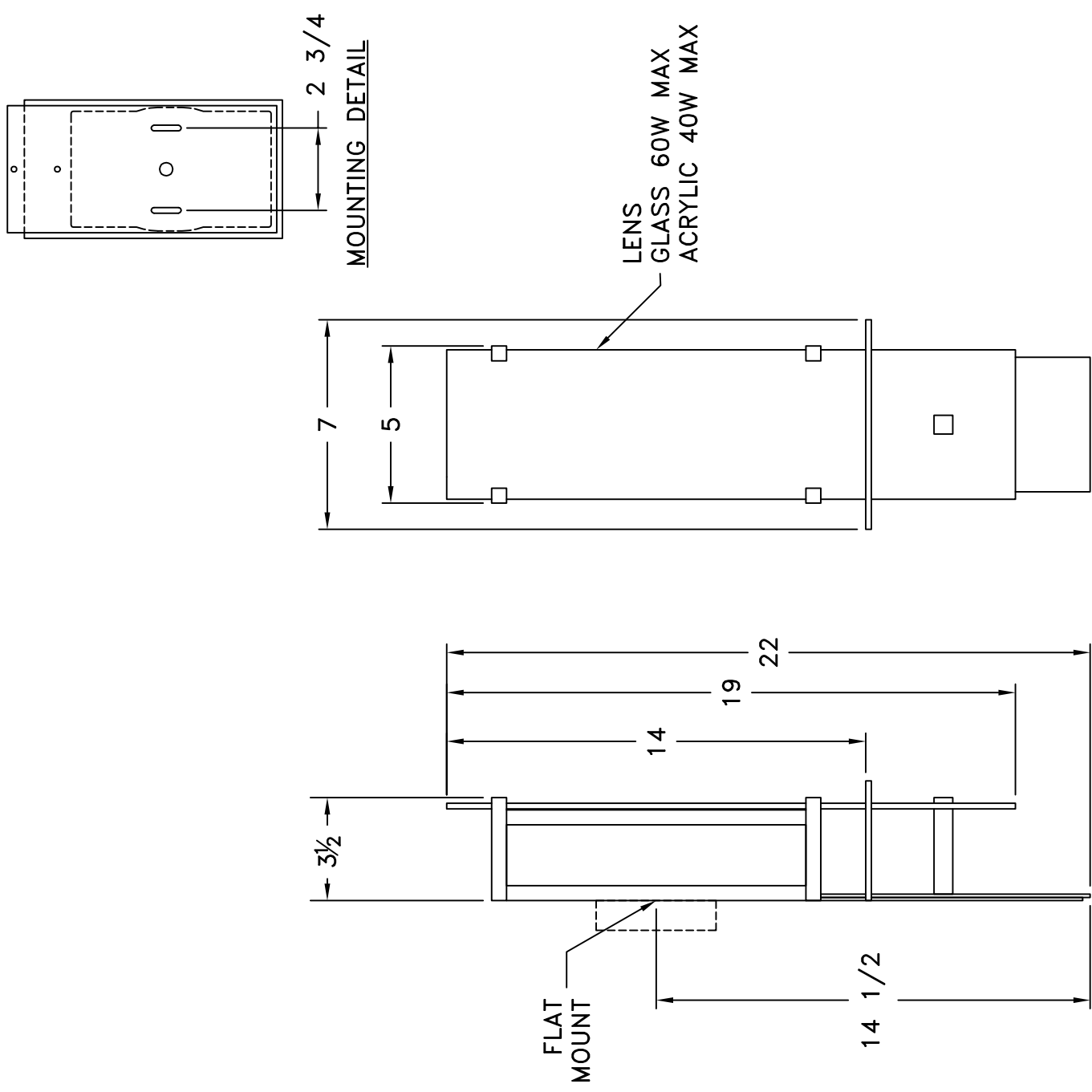


HAMMERTON

SPECIFICATION DRAWING

Location:

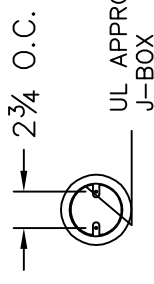
Product #: ID2176



Visit [hammertron.com](http://www.hammertron.com) for product options and specifications.

Mounting Style: D	Electrical Type: INCANDESCENT
Approximate lbs.: 8	Bulb Qty: 2 Wattage: SEE LENS
Finish: SEE WEB SITE FOR OPTIONS	Voltage: 120
Top Diffuser: OPEN	Socket Type: CANDELABRA
Bottom Diffuser: OPEN	UL Location: DRY

Mounting Detail



CAUTION

HARDWARE PACKET "E"
MOUNTS DIRECTLY TO
J-BOX.

All fixtures created by Hammertron are handcrafted by artisans. Dimensions may vary up to $\frac{7}{8}$ ".

© Copyright 2013. All rights in design, detail or invention of this drawing are reserved as the property of Hammertron. Any limitation or adaptation without written consent is strictly prohibited.

Hammertron Inc. · 217 Wright Brothers Dr. · Salt Lake City, UT 84116 · (801) 973-8095